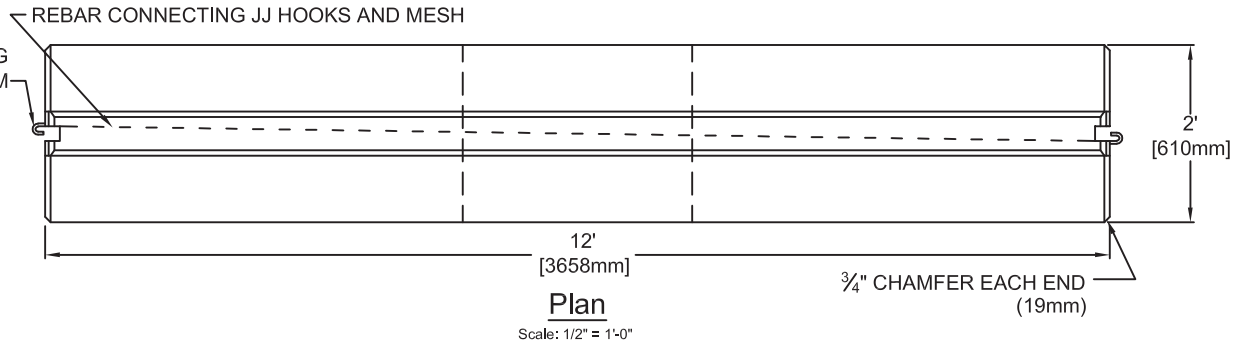
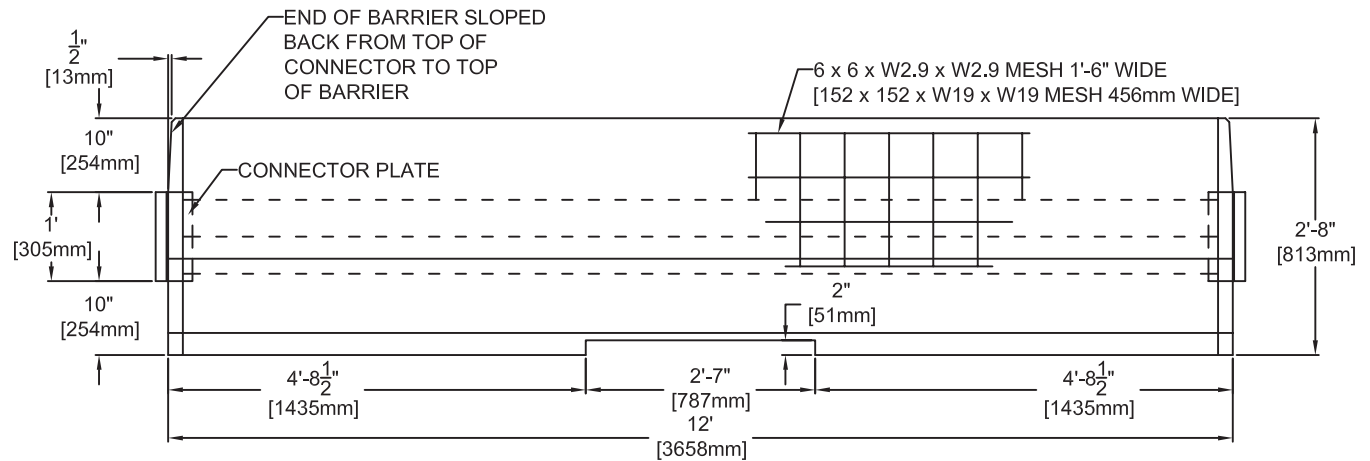


Elevation End
Scale: 1/2" = 1'-0"

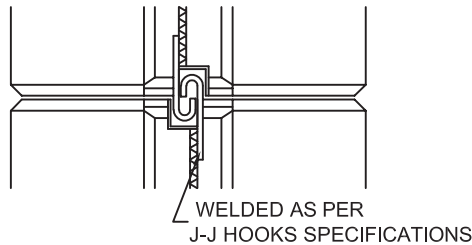
J-J HOOKS INTERLOCKING CONNECTION SYSTEM



Plan
Scale: 1/2" = 1'-0"



Elevation
Scale: 1/2" = 1'-0"



Plan of End
Scale: 1" = 1'-0"

WELDED AS PER J-J HOOKS SPECIFICATIONS

FEDERAL HIGHWAY ADMINISTRATION
NCHRP 350 LEVEL 3 APPROVED

GENERAL NOTES:

- 1 - PORTABLE CONCRETE BARRIER DESIGN SPECIFICATIONS CONFORM TO THE LATEST ASTM C-825 SPECIFICATIONS FOR "PRECAST CONCRETE BARRIERS" AND NCDOT 1170.01.
- 2 - CONCRETE COMPRESSIVE STRENGTH 4,500 PSI MINIMUM.
- 3 - STEEL REINFORCING DESIGN TO CONFORM TO THE REQUIREMENTS OF ASTM A-706 GRADE 60 REBARS AND ASTM A-185 WELDED WIRE FABRIC AND J-J HOOKS REQUIREMENT FOR NCHRP-350.
- 4 - ALL WELDING TO BE IN ACCORDANCE WITH AMERICAN WELDING SOCIETY (AWS) STRUCTURAL WELDING CODES.
- 5 - BARRIER CONNECTORS FHWA APPROVED SHAPE J-J HOOK, IS ACCEPTED BY FHWA AS A CRASH TESTED AND OPERATIONAL DESIGN FOR USE ON ALL FEDERAL AND HIGHWAY PROJECTS. MEETS FEDERAL SPECIFICATION NCHRP-350.
- 6 - ALL ANCHOR ASSEMBLIES SUPPLIED BY CONTRACTOR.

REV. NO.	DATE	BY	REMARKS

DATE:	April 25, 2002
DRAWN BY:	J. Wells

CAROLINA PRECAST
Setting the Standard

P. O. Box 1061
Dunn, North Carolina 28335
(910) 892-6411 fax: (910) 892-4894
1-866-PRECAST
www.carolinaprecast.com

NCDOT
NCDOT 1170.01
© 2007 Carolina Precast Concrete, Inc.

Portable Concrete Barrier
J-J Hook Design
Jersey Shape Standard

CPC ORDER NO: 11865
FILE NAME: MBLay.dwg
SHEET NO.
1 of 1