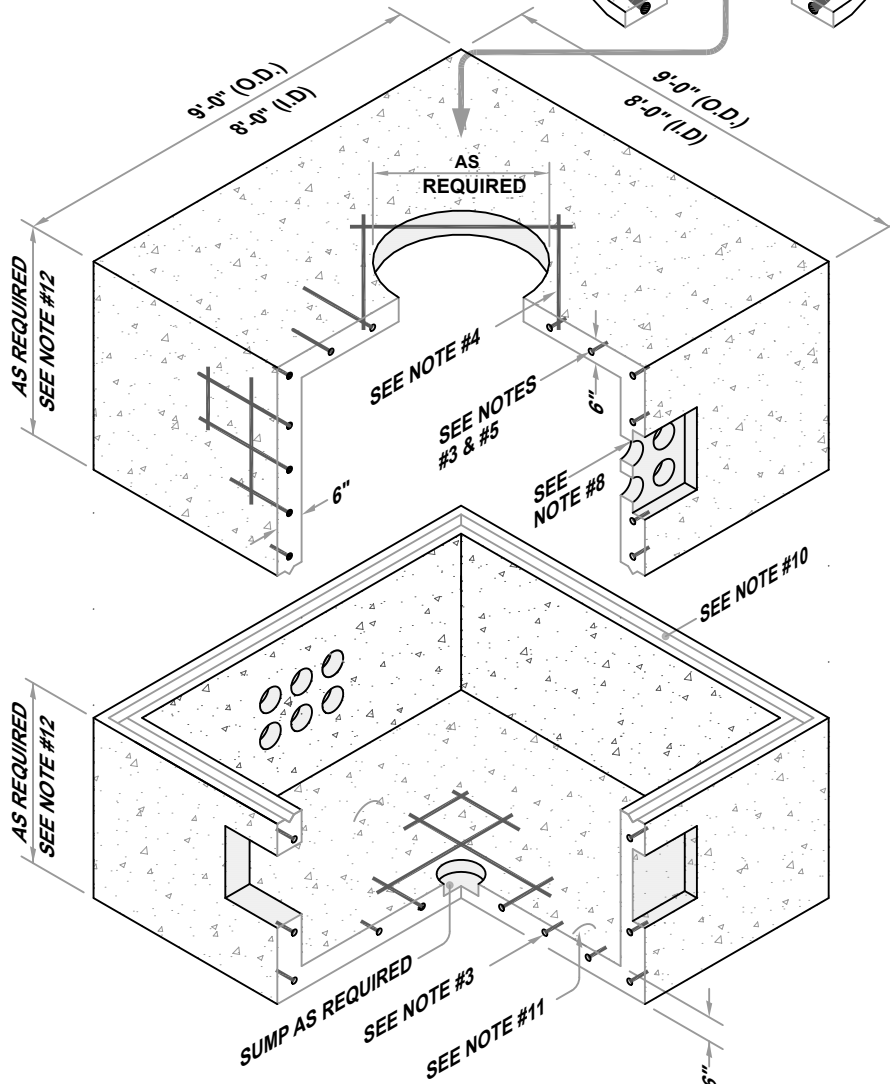
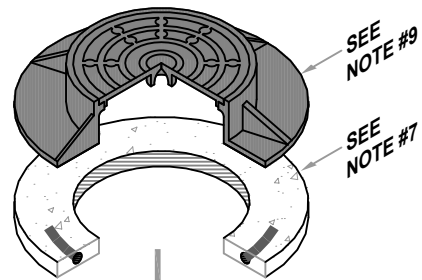


**GENERAL NOTES:**

1. DESIGN SPECIFICATIONS CONFORM TO ASTM C 858 SPECIFICATIONS "UNDERGROUND PRECAST CONCRETE UTILITY STRUCTURE".
2. CONCRETE COMPRESSIVE STRENGTH 4,000 PSI MINIMUM.
3. STEEL REINFORCING DESIGN TO CONFORM TO THE REQUIREMENTS OF ASTM C857 SPECIFICATIONS FOR "STRUCTURAL DESIGN FOR UNDERGROUND PRECAST CONCRETE UTILITY STRUCTURES" AND SHALL UTILIZE GRADE 60 RE-BARS CONFORMING TO THE REQUIREMENTS OF ASTM A615 OR WWF CONFORMING TO THE REQUIREMENTS OF ASTM A185 OR BOTH.
4. ADDITIONAL REINFORCING AT OPENINGS.
5. DESIGNED FOR H-20-44 LOADING.
6. STEPS NOT PROVIDED.
7. CONTRACTOR TO ADJUST TO GRADE AS REQUIRED.
8. TERMINATORS, KNOCKOUTS OR BLOCKOUTS AS PER JOB SPECIFICATIONS.
9. CAST IRON RING AND COVER TO BE AS PER SPECIFICATIONS, SUPPLIED BY EITHER C.P.C. OR CUSTOMER. INSTALLED BY CONTRACTOR.
10. JOINTS TO BE SEALED WITH PREFORMED BUTYL RUBBER JOINT SEALANT CONFORMING TO THE REQUIREMENTS OF ASTM C990, OR MORTAR AS PER NCDOT REQUIREMENTS.
11. PULL EYES, GROUND ROD HOLE AND INSERTS FOR CABLE RACKS AS REQUIRED PER JOB SPECIFICATIONS.
12. WEIGHTS: (TOP OR BASE SECTION)
  - 3'-0" - APPROX. 13,725 LBS.
  - 3'-6" - APPROX. 15,000 LBS.
  - 4'-0" - APPROX. 16,275 LBS.



**8'-0" x 8'-0" x 8'-0" VARIABLE DEPTH  
UTILITY VAULT**